



AVK SUPA MAXI™ FLANGE ADAPTOR, PN10/16

633/00-001

Universal and tensile, A2 bolts, EPDM sealing



AVK's Supa Maxi™ range of universal tensile couplings sets a new standard. The patented SupaGrip™ sealing support system with flexible bracket ensures full support of the gasket and tensile strength. Supa Maxi™ couplings are easy to install as they offer $\pm 4^\circ$ angular deflection in both ends, lifting eyes, and bolts tightened from the sleeve side with no need for retightening. The permanent protection caps protect the couplings during transport and installation.



Product description:

Supa Maxi™ flange adaptor, universal and tensile with A2 bolts / A4 nuts. For drinking water and neutral liquids -10°C to $+70^\circ\text{C}$

Design standards:

- EN 14525
- Universal flange drilling to EN1092 (ISO 7005-2), PN 10/16

Test/Approvals:

- DN700 tensile up to 16 bar
- DN800 tensile up to 10 bar
- Belgaqua approved material
- Approved according to KIWA Certificate K 66561/02
- Approved according to SVGW Certificate No. 1205-6041
- Approved according to ACS-France

Features:

- Patented SupaGrip™ sealing support system with flexible bracket ensures full support of the gasket even at minimum pipe size
- Tensile strength on all pipes is ensured by two different metal grip segments - every second of brass for PE/PVC/GRP and of hardened stainless steel for cast iron/ductile iron/steel/stainless steel/asbestos cement pipes. For PE pipes a support bush is to be used
- $\pm 4^\circ$ angular deflection
- Large sealing ranges
- Ductile iron sleeve and bracket of cast steel with fusion bonded epoxy coating in compliance with DIN 3476 part 1 and EN 14901, GSK approved
- Gasket of drinking water approved EPDM rubber
- Bolts of A2 and nuts of A4 are anti-friction coated to prevent galling
- Permanent protection caps protect the coupling during handling and installation
- Large insertion depth tolerances allow for cutting the pipe slightly angled
- Bolts are tightened from the sleeve side for full access when space is limited
- Re-tightening of bolts is not necessary
- Lifting eye in DN100-800



BELGAQUA

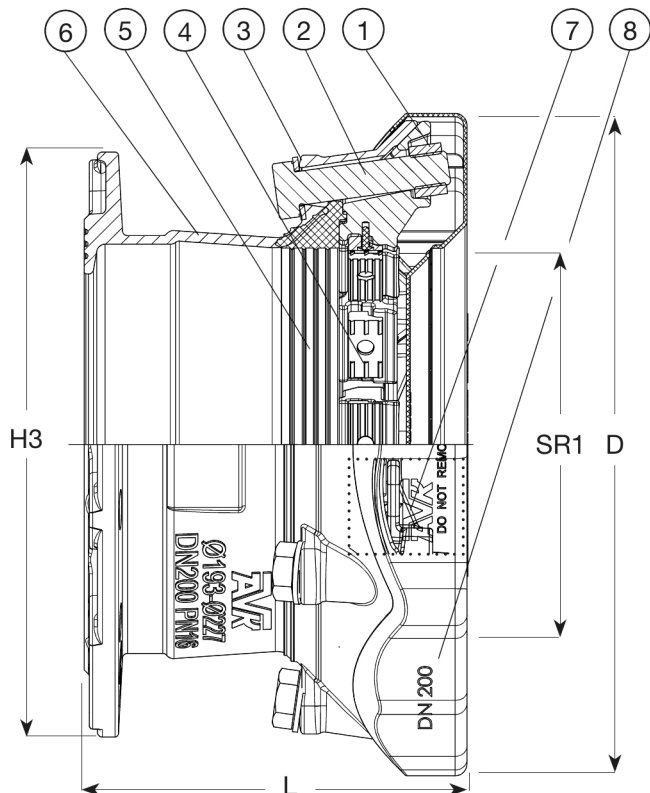
Expect ... **AVK**

The designs, materials and specifications shown are subject to change without notice due to the continuous development of our product range.

AVK SUPA MAXI™ FLANGE ADAPTOR, PN10/16

633/00-001

Universal and tensile, A2 bolts, EPDM sealing



DN	Supa Maxi end	Multi drilling*
40/50	3 x M14 x 75 mm	1, 2, 3, 4, 5, 8, 9, 10
50/65	3 x M16 x 75 mm	1, 2, 3, 4, 5, 8, 9, 10
80	3 x M16 x 75 mm	1, 2, 3, 4, 5, 8, 9, 10, 11, 12
100	4 x M16 x 75 mm	1, 2, 3, 4, 5, 6, 7, 8, 9, 11, 12
150	4 x M16 x 80 mm	1, 2, 5, 9, 11, 12
200	6 x M20 x 100 mm	1, 2, 5, 8, 9, 11, 12
250	6 x M20 x 100 mm	1, 2, 5
300	8 x M20 x 110 mm	1, 2, 5, 9, 11, 12
350	9 x M24 x 120 mm	1, 3, 10
400	10 x M24 x 120 mm	1, 2
450	12 x M24 x 120 mm	1
500	14 x M24 x 120 mm	1
600	18 x M24 x 130 mm	1
700	18 x M24 x 150 mm	1
800	20 x M24 x 150 mm	1

Drilling*	
1: ISO 7005-2, EN 1092-2: 1997, DIN 2501 (universal drilling)	6: BS 10 Table F
2: ANSI B16.1 CL 125	7: BS 10 Table H
3: BS 10 Table A	8: DIN 1882
4: BS 10 Table D	9: AS 2129 Table D+E
5: BS 10 Table E	10: AUG-TAU
	11: AS 4087 Fig. B5
	12: AS 4087 Table D

Component list:

1. Nut	Stainless steel A4	5. Gasket	EPDM rubber
2. Bolt	Stainless steel A2	6. Sleeve	Ductile Iron
3. Washer	Stainless steel A2	7. Bracket	Cast steel
4. Grip segment	Stainless steel / brass	8. Protection cap	PE

Components may be substituted with equivalent or higher class materials without prior notification.

Reference nos. and dimensions:

AVK ref. no.	Flange DN mm	PN Class	Flange drilling	Range mm	L mm	D mm	H3 mm	Theoretical weight/kg
633-071-00-006	40-50	PN16	10/16	48-71	197	200	165	5.0
633-091-00-006	50-65	PN16	10/16	69-91	197	226	185	6.0
633-106-00-006	80	PN16	10/16	82-106	198	235	200	6.5
633-133-00-006	100	PN16	10/16	104-133	203	268	229	9.0
633-133-01-006	80	PN16	10/16	104-133	210	268	200	9.0
633-161-00-006	100/125	PN16	10/16	132-159	198	285	229	11
633-161-01-006	150	PN16	10/16	132-159	198	285	285	11
633-188-00-006	150	PN16	10/16	159-188	220	340	285	12
633-227-00-006	200	PN16	10/16	193-227	243	389	343	19
633-257-00-006	250	PN16	10/16	224-257	245	437	406	25
633-257-01-006	200	PN16	10/16	224-257	245	437	343	25
633-301-00-006	250	PN16	10/16	266-301	254	476	406	28
633-356-00-006	300	PN16	10/16	314-356	282	545	483	38
633-396-00-006	350	PN16	10/16	352-396	435	612	540	87
633-442-00-006	400	PN16	10/16	392-442	447	661	597	80
633-510-00-006	450	PN16	10/16	448-510	614	740	660	145
633-552-00-006	500	PN16	10/16	498-552	605	772	735	166
633-652-00-006	600	PN16	10/16	604-652	634	872	850	213
633-745-00-006 (1)	700	PN16	10/16	700-745	650	991	920	379
633-842-00-00600004 (2)	800	PN16	10/16	800-842	690	1100	1035	437
633-842-00-00600006 (3)	800	PN16	10/16	800-842	690	1100	1035	437

The designs, materials and specifications shown are subject to change without notice due to the continuous development of our product range.

AVK SUPA MAXI™ FLANGE ADAPTOR, PN10/16

633/00-001

Universal and tensile, A2 bolts, EPDM sealing

Reference nos. and dimensions:

AVK ref. no.	Flange DN mm	PN Class	Flange drilling	Range mm	L mm	D mm	H3 mm	Theoretical weight/kg
(1)	PN16 only for non-tensile // Tensile up to 16 bar.							
(2)	For metal/AC pipes // PN16 only for non-tensile // Tensile up to 10 bar.							
(3)	For plastic pipes // PN16 only for non-tensile // Tensile up to 10 bar.							