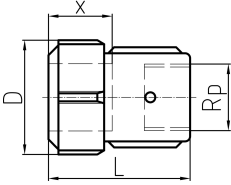




**Female Adaptor, galvanised  
for PE SDR 11/S 5 to Rp/EN 10226-1**

- including insert stiffener
- \*\*\* according to EN 1555-2



Dim. PE (mm)	Dim. Rp (inch)	NBR Code	SP	GP	Weight (kg)	D (mm)	L (mm)	x (mm)
20 x 2,0	½	<b>775 212 201</b>	1	30	0.227	45	58	31 - 33
25 x 2,3	¾	<b>775 212 202</b>	1	20	0.300	51	62	31 - 33
*** 25 x 3,0	¾	<b>775 212 442</b>	1	20	0.300	51	62	31 - 33
32 x 3,0	1	<b>775 212 203</b>	1	10	0.400	59	68	31 - 33
40 x 3,7	1 ¼	<b>775 212 204</b>	1	5	0.560	68	70	32 - 38
50 x 4,6	1 ½	<b>775 212 205</b>	1	5	0.700	75	75	35 - 43
63 x 5,8	2	<b>775 212 206</b>	1	5	1.308	96	83	39 - 47

The technical data are not binding. They neither constitute expressly warranted characteristics nor guaranteed properties nor a guaranteed durability. They are subject to modification. Our General Terms of Sale apply.

Georg Fischer Piping Systems Ltd, Postfach, CH-8201 Schaffhausen/Switzerland

Phone +41 -(0)52-631 1111

e-mail: [info.ps@georgfischer.com](mailto:info.ps@georgfischer.com)

Internet: <http://www.gfps.com>